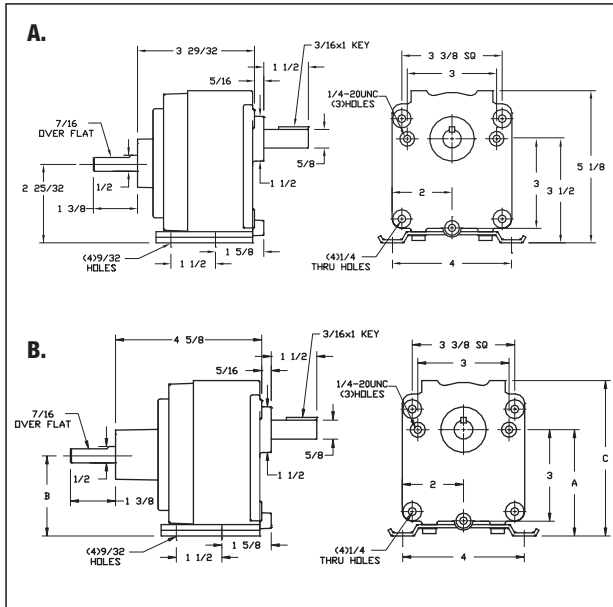
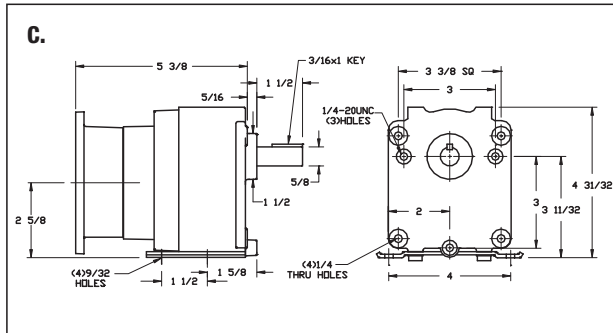




A. and B.
Indirect Drive



C.
42CZ/48C-Face



Dayton

Indirect-Drive and 42CZ/48C-Face Parallel-Shaft Speed Reducers with Base

- All-position mounting using face, base, and top
- Shipped with heavy-duty SAE 80W-90 oil lubricant in gearcase
- Spring-loaded lip oil seals on input and output shafts

Base allows high or low positioning of output shaft; face-mounting holes on output side of reducer. Heat-treated steel pinion with helical first stage gearing. Heavy-duty needle and ball bearings with thrust balls. Die-cast aluminum gearcase housing.

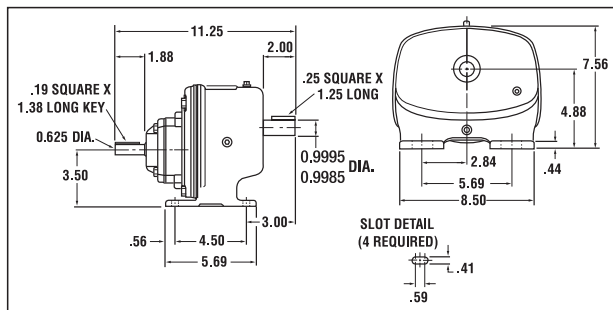
Item No.	Key	Dimensions (in.)		
		A	B	C
42498	B	3.328	2.625	4.953
42499 to 42503	B	3.718	3.000	5.344

Key	Nom. Output RPM*	Nom. Ratio	No. of Stages	Max. Input HP	Max. Output Torque	Item No.
Indirect Drive Speed Reducers						
A	15 RPM	118.5:1	3	0.05 hp	200 in-lb	22819
A	33 RPM	52.9:1	2	0.1 hp	175 in-lb	22820
A	72	23.4:1	2	0.1667 hp	100.0 in-lb	22821
B	19 RPM	92:1	3	0.1 hp	290 in-lb	42498
B	34 RPM	51:1	3	0.1667 hp	260 in-lb	42499
B	48 RPM	36:1	3	0.25 hp	295 in-lb	42500
B	61 RPM	28:1	2	0.25 hp	225 in-lb	42501
B	90 RPM	19:1	2	0.3333 hp	225 in-lb	42502
B	135 RPM	13:1	2	0.3333 hp	175 in-lb	42503
42CZ/48C-Face Speed Reducers †						
C	20 RPM	87.8:1	3	0.1 hp	254 in-lb	1L515
C	30 RPM	58.3:1	3	0.125 hp	278 in-lb	1L537
C	49 RPM	35.8:1	3	0.25 hp	295 in-lb	1L514
C	62 RPM	28:1	2	0.25 hp	240 in-lb	1L513
C	77 RPM	22.7:1	2	0.25 hp	184 in-lb	1L512
C	92	19:1	2	0.3333 hp	226.0 in-lb	1L511
C	138 RPM	12.7:1	2	0.3333 hp	176 in-lb	1L516

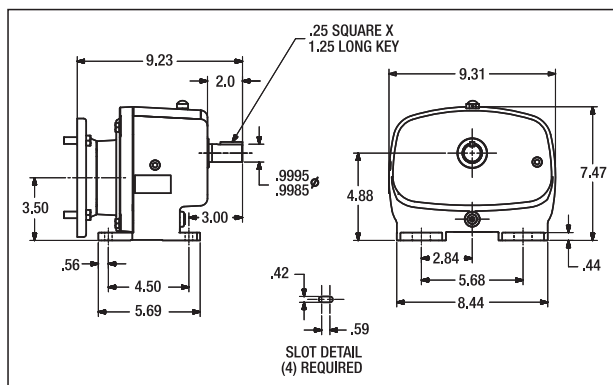
* @ 1725 rpm. Maximum input speed is 1750 rpm.
† C-Face units contain a 0.500" dia. bore with 0.125 x 0.062" keyway.



Indirect-Drive



56C-Face



Dayton

Indirect-Drive and 56C-Face Parallel-Shaft Speed Reducers

- Horizontal mounting
- Shipped with Klüberlub UH1 6-460 gear oil 34K212
- Spring-loaded double-lip seals on input and output shafts

Hardened steel pinions, helical and spur gears are computer-matched for high efficiency; designed per AGMA standards. Ball bearing-supported input shaft; deep-grooved ball bearing output shaft. Cast-aluminum gearcase.

Nom. Output RPM*	Overhung Load	Nom. Ratio	Max. Input HP	Max. Output Torque	Item No.
Indirect Drive Speed Reducers					
20 RPM	1,192 lb	87:1	0.3 hp	998 in-lb	42856
30 RPM	885 lb	57.5:1	0.5 hp	998 in-lb	42857
45 RPM	863 lb	38.5:1	0.5 hp	665 in-lb	42858
56 RPM	712 lb	31:1	0.75 hp	816 in-lb	42859
100 RPM	773 lb	17.5:1	0.75 hp	454 in-lb	42860
140 RPM	709 lb	12.5:1	1 hp	427 in-lb	42861
56C-Face Speed Reducers					
20 RPM	1,192 lb	87:1	0.3 hp	998 in-lb	42720
30 RPM	885 lb	57.5:1	0.5 hp	998 in-lb	42614
45 RPM	863 lb	38.5:1	0.5 hp	665 in-lb	42615
56 RPM	712 lb	31:1	0.75 hp	816 in-lb	42616
100 RPM	773 lb	17.5:1	0.75 hp	454 in-lb	42617
140 RPM	709 lb	12.5:1	1 hp	427 in-lb	42719

* @ 1725 rpm.