



Combination Vises

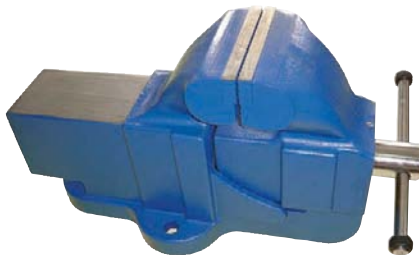
- Replacement jaws and magnetic caps are available on Grainger.com
 - All have serrated jaw face, except 29YW78 is smooth and 61KD23 is knurled
- These vises combine the features of bench vises and pipe vises to securely clamp straight workpieces and irregular-shaped workpieces, as well as round tubing and pipe.



29YW07

Jaw Face Width	Max. Opening	Throat Depth	Base Type	Pipe Jaw Included	Pipe Capacity	Reversible	High Visibility	Base Swivel Angle	Brand	Item No.
Light Duty										
20,000 psi Body Casting Tensile Strength										
5 in	5 in	2 1/2 in	Swivel	No	—	No	No	120°	Wilton	29YW07
6 in	6 in	3 in	Swivel	No	—	No	No	120°	Wilton	29YV61
Standard Duty										
30,000 psi Body Casting Tensile Strength										
2 1/2 in	2 1/2 in	1 3/4 in	Swivel	No	—	No	No	45°	Wilton	5LK54
3 1/2 in	3 1/2 in	2 in	Swivel	Yes	3/8 in to 1 1/2 in	No	No	360°	Westward	10D702
4 in	2 1/4 in	2 in	Swivel	No	—	No	No	45°	Wilton	5LK53
4 in	4 in	2 1/4 in	Swivel	Yes	—	No	No	120°	Wilton	29YU53
4 in	4 in	2 1/4 in	Swivel	Yes	1/4 in to 1 1/2 in	No	No	360°	Westward	4YR98
4 in	4 in	2 1/4 in	Swivel	Yes	3/8 in to 2 in	No	No	360°	Wilton	24W174
4 in	4 1/2 in	3 1/8 in	Swivel	Yes	1/4 in to 2 in	No	No	360°	Wilton	22474
4 in	4 1/2 in	3 1/8 in	Swivel	Yes	1/4 in to 2 in	No	No	360°	Westward	10D708
4 1/2 in	4 in	2 1/2 in	Swivel	Yes	1/8 in to 1 1/2 in	No	No	360°	Westward	10D710
4 1/2 in	4 in	2 1/2 in	Swivel	Yes	1/8 in to 1 1/2 in	No	No	360°	Wilton	55EN82
5 in	5 in	2 1/2 in	Swivel	Yes	1/2 in to 1 1/4 in	No	No	360°	Westward	4YP27
5 in	5 in	3 in	Swivel	Yes	3/8 in to 2 3/8 in	No	No	360°	Wilton	24W175
5 in	5 1/4 in	3 3/4 in	Swivel	Yes	1/4 in to 2 1/2 in	No	Yes	360°	Wilton	5LJ84
5 in	5 1/4 in	3 3/4 in	Swivel	Yes	1/4 in to 2 1/2 in	No	No	360°	Wilton	22346
5 in	5 1/4 in	3 3/4 in	Swivel	Yes	3/8 in to 2 1/2 in	No	No	360°	Westward	10D707
5 1/2 in	5 in	2 1/4 in	Swivel	Yes	3/8 in to 2 1/2 in	No	No	360°	Wilton	55FF51
5 1/2 in	5 in	3 1/4 in	Swivel	Yes	1/4 in to 2 in	No	No	360°	Wilton	55EN83
5 1/2 in	5 1/2 in	3 3/4 in	Swivel	Yes	1/4 in to 3 in	No	No	360°	Westward	10D711
5 1/2 in	6 3/4 in	3 3/4 in	Swivel	Yes	1/8 to 2 1/2 in	Yes	No	360°	Wilton	55FF50
6 in	5 3/4 in	4 1/8 in	Swivel	Yes	1/4 in to 3 1/2 in	No	No	360°	Wilton	1ATH4
6 in	5 3/4 in	4 1/8 in	Swivel	Yes	1/4 in to 3 1/2 in	No	Yes	360°	Wilton	5LJ85
6 in	6 in	3 1/2 in	Swivel	Yes	3/8 in to 2 1/2 in	No	No	360°	Wilton	24W176
6 1/2 in	5 1/2 in	3 3/8 in	Swivel	No	1/8 in to 2 1/2 in	No	Yes	180°	Wilton	54TU07
6 1/2 in	6 in	4 in	Swivel	Yes	1/4 in to 2 in	No	No	360°	Wilton	55FE57
6 1/2 in	6 in	4 1/4 in	Swivel	Yes	1/4 in to 3 1/2 in	No	No	360°	Wilton	55EN84
6 1/2 in	7 1/2 in	4 in	Swivel	Yes	1/4 in to 3 in	Yes	No	360°	Wilton	55FF53
8 in	8 in	3 1/2 in	Swivel	Yes	3/8 in to 3 in	No	No	360°	Westward	6RA23
8 in	8 in	4 in	Swivel	Yes	3/4 in to 3 in	No	No	360°	Wilton	24W177
8 in	8 1/4 in	4 1/2 in	Swivel	Yes	3/8 in to 4 in	No	No	360°	Wilton	55FF52
8 in	8 1/4 in	4 1/2 in	Swivel	Yes	3/8 in to 2 1/2 in	No	No	360°	Westward	10D709
8 in	8 1/4 in	4 1/2 in	Swivel	Yes	1/4 in to 3 1/2 in	No	No	360°	Wilton	6YA70
8 in	9 1/4 in	4 3/4 in	Swivel	Yes	3/8 in to 4 in	Yes	No	360°	Wilton	55EK36
45,000 psi Body Casting Tensile Strength										
6 in	6 in	3 in	Clamp-On Stationary	Yes	1/2 to 3 1/2 in	No	Yes	360°	Westward	54ZV75
Heavy Duty										
60,000 psi Body Casting Tensile Strength										
3 1/2 in	5 in	4 1/2 in	Swivel	Yes	1/4 in to 2 1/2 in	No	No	360°	Wilton	498X14
4 1/2 in	3 1/2 in	3 3/8 in	Swivel	Yes	1/4 in to 2 1/2 in	No	No	360°	Wilton	638H22
4 1/2 in	7 in	4 3/4 in	Swivel	Yes	1/4 in to 3 1/2 in	No	No	360°	Wilton	498X15
5 in	5 in	3 3/8 in	Stationary	No	1/4 in to 3 in	No	No	360°	Westward	3FDJ1
5 in	6 in	3 1/2 in	Swivel	Yes	1/4 in to 2 1/2 in	No	No	360°	Palmgren	19D152
5 in	7 1/8 in	5 1/2 in	Swivel	Yes	1/8 in to 4 1/2 in	No	No	360°	Wilton	498X16
5 1/2 in	5 in	3 3/8 in	Swivel	Yes	1/4 in to 3 in	No	No	360°	Wilton	498X10
5 1/2 in	5 in	4 1/4 in	Swivel	Yes	3/8 in to 3 1/2 in	No	No	360°	Wilton	638H23
6 in	6 in	3 in	Swivel	Yes	1 in to 2 1/2 in	No	No	360°	Westward	3FDG9
6 in	6 in	3 in	Swivel	Yes	1 in to 2 in	No	No	360°	Westward	10D695
6 in	7 in	3 3/4 in	Swivel	Yes	1/4 in to 3 1/2 in	No	No	360°	Palmgren	19D153
6 in	10 in	6 3/8 in	Swivel	Yes	1/4 in to 6 in	No	No	360°	Wilton	498X17
6 1/2 in	6 in	4 3/8 in	Swivel	Yes	1/2 in to 4 in	No	No	360°	Wilton	498X11
6 1/2 in	6 in	5 in	Swivel	Yes	3/8 in to 4 in	No	No	360°	Wilton	638H24
7 in	8 in	3 in	Swivel	Yes	1 in to 2 in	No	No	360°	Westward	10D694
8 in	6 3/4 in	3 1/2 in	Swivel	Yes	1/8 in to 3 1/2 in	Yes	No	360°	Wilton	638H21
8 in	8 1/4 in	4 1/2 in	Swivel	Yes	1/2 in to 4 in	No	No	360°	Wilton	498X12
10 in	12 in	5 1/2 in	Swivel	Yes	1/4 in to 5 in	No	No	360°	Wilton	498X13
65,000 psi Body Casting Tensile Strength										
5 1/2 in	5 3/4 in	3 3/4 in	Clamp-On Swivel	Yes	3/8 to 3 1/2 in	No	No	360°	Palmgren	61KD23
6 1/2 in	8 1/2 in	4 1/2 in	Swivel	Yes	—	—	—	360°	Palmgren	61KD24
8 1/2 in	9 in	4 in	Swivel	Yes	—	—	—	360°	Palmgren	61KD25
75,000 psi Body Casting Tensile Strength										
4 1/2 in	6 in	3 in	Swivel	Yes	3/8 in to 3 in	No	No	360°	RIDGID	4WN27
5 in	7 in	3 3/8 in	Swivel	Yes	1/2 in to 3 1/2 in	No	No	360°	RIDGID	4WN28
5 in	8 in	3 1/2 in	Swivel	Yes	1/2 in to 3 1/2 in	No	No	360°	RIDGID	3AFP6
6 in	6 in	4 in	Swivel	Yes	1/2 in to 4 in	No	No	360°	RIDGID	4WN29

*Deep Throat



3FDJ1



498X22

Machinist's Vises

- Body casting tensile strength: 60,000 psi
- Replacement jaws and magnetic caps are available on Grainger.com

Designed for cutting and welding parts or shaping materials, these vises feature replaceable steel serrated jaws, extra large bodies, larger throat openings, anvils, 360° swivel jaws, and swivel bases.

Jaw Width	Max. Opening	Throat Depth	Item No.
3 in	4 3/4 in	2 3/8 in	498X18
4 in	6 1/2 in	3 1/2 in	498X19
6 in	10 in	5 1/2 in	498X21
8 in	12 in	5 13/16 in	498X22