

1-800-GRAINGER (472-4643)



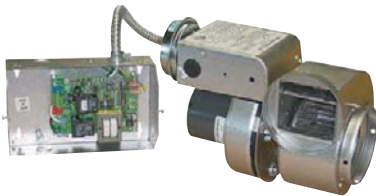
52CF16



Lay-In Grilles

Lay-in grilles nest inside openings in a ceiling and rest on the edge of the T-bar grid. They are held in place using gravity and do not require additional hardware for installation. Grilles are used with drop ceilings and other applications where ventilation configurations are common.

Opening H x W (in)	Overall H x W x D (in)	Bar Spacing (in)	Face Design	Item No.	Pkg. Qty.
Aluminum Grille, Silver Finish — American Louver					
48 x 24	47 3/4 x 23 3/4 x 1/2	1/2	Egg Crate	52CF19	2
	47 3/4 x 23 3/4 x 1/2	1/2	Egg Crate	52CF20	5
Aluminum Grille, White Finish — American Louver					
10 x 22	21 3/8 x 9 3/8 x 1	1/2	Egg Crate	52CF16	4
22 x 22	21 3/8 x 21 3/8 x 1	1/2	Egg Crate	52CF15	2
	23 3/4 x 23 3/4 x 1	1/2	Egg Crate	52CF13	2
48 x 24	47 3/4 x 23 3/4 x 1/2	1/2	Egg Crate	52CF22	5
	47 3/4 x 23 3/4 x 1/2	1/2	Egg Crate	52CF21	2
Plastic Grille, Black Finish — American Louver					
22 x 22	23 3/4 x 23 3/4 x 2 1/8	1/2	Egg Crate	54ZF48	1
Plastic Grille, White Finish — American Louver					
22 x 22	23 3/4 x 23 3/4 x 2 1/8	1/2	Egg Crate	54ZF47	1
48 x 24	47 3/4 x 23 3/4 x 1/2	1/2	Egg Crate	52CF18	5
	47 3/4 x 23 3/4 x 1/2	1/2	Egg Crate	52CF17	2
Steel Grille, White Finish — Approved Vendor					
6 x 14	23 3/4 x 23 3/4 x 3 1/2	1/8	Perforated	4MJU7	1
8 x 8	23 3/4 x 23 3/4 x 4 3/4	1/8	Perforated	4MJV1	1
24 x 24	23 3/4 x 23 3/4 x 3 1/2	1/8	Perforated	4MJV6	1

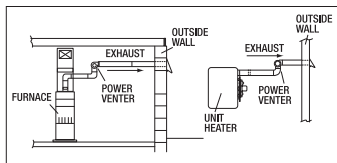


High-Temperature Sidewall Power Venters

■ Nominal voltage: 115V AC

Mechanically vent Category 1 heaters through a wall, eliminating the need for a traditional chimney. Include UC1 heater interlock control and fan proving switch. Interlock with any 24/120VAC burner circuit. Feature adjustable pre/post purge, LED status indicators, and fault code memory. Vent Hood 4C845 (on this page) is recommended for Power Venters 4KA72 and 4KA73.

Ideal for sidewall vent furnaces, boilers, water heaters, pool heaters, and unit heaters. Use for electric to gas conversions, heating equipment upgrades, new construction, and replacing chimneys.

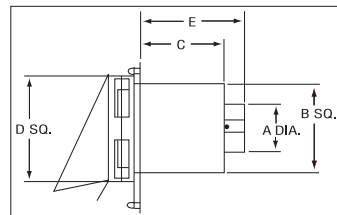


For Pipe Dia. (in)	Max. Heater BTU Input for Gas Appliance	Max. Heater BTU Input for Oil Appliance	Includes	Mfr. Model	Item No.
LP, Natural Gas, Oil					
4	125,000	75,000	Fan Proving Switch,	HSJ	4KA72
4 to 6	300,000	200,000	UC1 Universal Control	HS1	4KA73
6 to 8	600,000	450,000		HS2	4KA74
LP, Natural Gas					
8 to 10	700,000	NA	Fan Proving Switch, UC1 Universal Control	HS3	4KA75



High-Temperature Vent Hoods

Designed to efficiently terminate horizontal vent runs handling flue gases from furnaces, unit heaters, and boilers. Made of 18-ga. corrosion-resistant aluminum alloy. 4C845 has built-in heat shield which provides clearance from combustible material contained in walls. Can be used with sidewall power venters, this page.



A, Dia. (in.)	B, Sq. (in.)	C (in.)	D, Sq. (in.)	E (in.)	Mfr. Model	Item No.
3 in	6 1/4 in	8 1/4 in	10 in	10 in	VH1-3	14U196
4 in	7 1/2 in	7 1/2 in	9 in	8 1/2 in	VH1-4	4C845
6 in	8 1/2 in	7 1/2 in	12 in	9 1/2 in	VH1-6	6KX22
8 in	16 in	7 3/4 in	18 1/2 in	20 in	VH1-8	6KX23
10 in	16 in	7 3/4 in	18 1/2 in	20 in	VH1-10	6KX24

Pipe-Mount Exhaust Draft Inducers



■ Nominal voltage: 115V AC

These inducers move gases through an exhaust system, helping to remove them from the structure. They install into the exhaust section of combustion systems and help to start the draft airflow. Models are not OEM-specific and will work in a wide variety of systems and installations.

For Pipe Dia. (in)	Max. Heater BTU Input for Gas Appliance	Max. Heater BTU Input for Oil Appliance	Includes	Mfr. Model	Item No.
LP, Natural Gas, Oil					
3 to 4	170,000	151,000	Two Piece Backing Plate	SWG-4HD	45DX23
5 to 6	416,000	364,000		SWG-6	45DX27
7 to 8	740,000	652,000		SWG-8	45DX29
LP, Natural Gas					
5 to 5	610,000	NA	4 in MG-1 Draft Control, 4 in Vent Hood, PVG Power Venter	PVG-600	45DX33
Coal, Natural Gas, Oil					
5 to 8	353,000	412,000	DI/CK Adapter Kit, Pressure Sensing Tube	DI-2	45DX36



Inducer



Universal Control Board



Rooftop Stand

Roof-Mount Exhaust Draft Inducers



■ Nominal voltage: 115V AC

■ Powder-coated clamshell housing eases installation, inspection, and service

■ Stainless steel blower wheel

Ideal solution for inaccessible and short-length vent connectors and chimneys, and for noise-sensitive locations. Optional rooftop stand supports weight of the inducer for metal chimney installations. Rooftop mounting maintains negative pressure throughout the entire vent system. ETL Listed to UL 378, UL 705, and CAN/CSA B255-M81.

Gas/Oil Applications, 5PWD8 and 5PWD9—Use to exhaust clothes dryer vents and exhaust chases serving multiple floors/sources. Pair with Controller 35UP43 for demand-based automatic speed control (sold separately on Grainger.com). Also rated for use with non-condensing oil and gas heating equipment when installed with either 4KA76 (sold separately on Grainger.com) or Interlock Controls 5PWE2 (sold separately, this page).

Solid Fuel Applications, 5PWE0 and 5PWE1—Use to increase fireplace draft to help eliminate fire starting and smoky backup problems. Included mounting kit attaches to both tile-lined and metal flues. Also includes wall-mount speed control.

For Pipe Dia. (in)	Max. Hearth Opening (sq ft)	Max. Heater BTU Input for Gas Appliance	Max. Heater BTU Input for Oil Appliance	Amps	H (in)	W (in)	D (in)	Mfr. Model	Item No.
Gas/Oil Applications, Incl. Fan Proving Switch									
8 to 10 in	—	1,200,000	1,500,000	1.2	17 1/2	16	16	RT750	5PWD8
12 to 14 in	—	2,700,000	3,700,000	5.8	22 1/2	18 1/2	18 1/2	RT1500	5PWD9
Solid Fuel Applications, Incl. Manual Speed Control									
—	14	—	—	1.2	17 1/2	16	16	RT750H	5PWE0
—	28	—	—	5.8	22 1/2	18 1/2	18 1/2	RT1500H	5PWE1

Accessories

Universal Control Board, For Use With 5PWD8 and 5PWD9	UCRT	5PWE2
Rooftop Stand, For Use With RT-Series Fans	RTS8	5PWE3
Rooftop Stand, For Use With RT-Series Fans	RTS12	5PWE4

Selection Guide

Item No.	Min. Chimney Inside Dia. *	BTU/hr. Input, Gas with Draft Hood/Diverter	BTU/hr. Input, Gas/Oil with Barometric Control	Max. Equivalent** Vent Length (ft.) @ 400°F
Gas/Oil Applications				
5PWD8	8"	400,000-700,000	500,000-900,000	100
		700,000-900,000	900,000-1,200,000	50
		700,000-1,000,000	900,000-1,200,000	100
5PWD9	12"	1,000,000-1,200,000	1,200,000-1,500,000	50
		1,000,000-2,000,000	1,200,000-2,700,000	100
		2,000,000-2,400,000	2,700,000-3,200,000	50
5PWD9	14"	2,000,000-2,500,000	2,700,000-3,500,000	100
		2,500,000-2,700,000	3,500,000-3,700,000	50

*Select inducer based on the BTU/hr. input of appliance rather than diameter of appliance vent outlet or chimney. **To determine equivalent ft., add the total length of straight vent pipe plus 10 ft. for each 90° elbow and 5 ft. for each 45° elbow.

Item No. Max. Face Area of Fireplace†

5PWE0	14 sq. ft.
5PWE1	28 sq. ft.

† Determine vertical and horizontal face opening of hearth in sq. ft. (If open on sides or back, total all openings.)