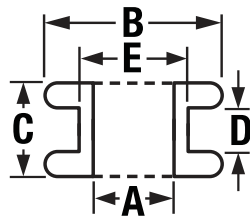
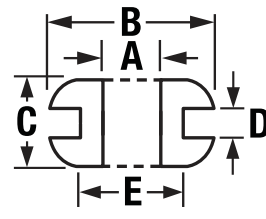


Style 1



Style 3



Style 5

Rubber Grommets

Protect against abrasion damage when wires, tubes, and other objects are inserted through holes in metal, plastic, or other hard materials.



Inside Dia. (A)	Outside Dia. (B)	Overall Thickness (C)	Panel Thickness (D)	Panel Hole Dia. (E)	Item No.	Pkg. Qty.
Style 1						
General Purpose SBR - Meets ASTM D2000 2AA606						
3/16 in	13/32 in	5/16 in	3/32 in	9/32 in	3MPN7	100
9/32 in	9/16 in	1/4 in	1/16 in	3/8 in	3MPK5	100
9/16 in	11/16 in	7/16 in	1/4 in	1/2 in	3MPK7	100
3/8 in	5/8 in	1/4 in	1/16 in	1/2 in	3MPL3	50
3/8 in	7/8 in	3/8 in	1/8 in	5/8 in	3MPK7	100
1/2 in	13/16 in	9/32 in	1/16 in	5/8 in	3MPL5	50
1/2 in	1 in	9/32 in	3/32 in	3/4 in	3MPK8	100
9/16 in	1 in	9/16 in	1/16 in	3/4 in	3MPR4	100
9/16 in	1 1/8 in	9/16 in	1/16 in	7/8 in	3MPR5	100
9/16 in	1 1/8 in	3/8 in	1/16 in	7/8 in	3MPR6	100
3/4 in	1 1/8 in	9/16 in	3/32 in	1 1/8 in	3MPL8	50
3/4 in	1 1/2 in	9/16 in	3/32 in	1 1/8 in	3MPT1	25
7/8 in	1 5/8 in	9/16 in	1/16 in	1 1/4 in	3MPL1	25
1 1/4 in	1 7/8 in	11/32 in	1/16 in	1 1/2 in	3MPT4	25
1 1/4 in	1 7/8 in	9/16 in	9/32 in	1 1/2 in	3MPT5	25
1 in	1 3/4 in	3/8 in	9/32 in	1 3/8 in	3MPT2	25
1 in	1 3/4 in	13/32 in	7/64 in	1 3/8 in	3MPT3	25
1 1/2 in	2 3/8 in	3/8 in	9/32 in	2 in	3MPT7	25
Style 3						
General Purpose SBR - Meets ASTM D2000 2AA606						
1/4 in	9/16 in	3/16 in	1/16 in	7/16 in	3MPT9	20
9/16 in	3/4 in	3/8 in	1/8 in	1/2 in	3MPU1	20
3/8 in	13/16 in	1/2 in	9/32 in	5/8 in	3MPK9	100
13/32 in	13/16 in	5/16 in	1/16 in	9/16 in	3MPU2	20
Style 5						
3/16 in	5/8 in	7/32 in	1/16 in	5/16 in	3MPU5	20
9/16 in	1 in	13/32 in	3/64 in	13/16 in	3MPU6	20

Specifications:	AN	MS	Inside Dia. (A)	Outside Dia. (B)	Overall Thickness (C)	Panel Thickness (D)	Panel Hole Dia. (E)	Item No.	Pkg. Qty.
Style 1									
Oil Resistant Buna-N - Meets ASTM D2000 2B6506									
931 No.	35489 No.								
3-5	4	3/16 in	7/16 in	3/16 in	1/16 in	5/16 in	5/16 in	3MRG4	50
A3-5	33	3/16 in	7/16 in	1/4 in	1/8 in	5/16 in	5/16 in	3MRG5	50
A5-12	39	9/16 in	1 in	3/8 in	1/8 in	3/4 in	3/4 in	3MRJ3	25
B6-10	69	3/8 in	7/8 in	7/16 in	3/16 in	5/8 in	5/8 in	3MRK2	50
A10-14	46	5/8 in	1 1/8 in	3/8 in	3/8 in	7/8 in	7/8 in	3MRL4	10
B10-14	75	5/8 in	1 1/8 in	7/16 in	9/16 in	7/8 in	7/8 in	3MRL5	10
12-20	135	3/4 in	1 3/8 in	1/4 in	1/16 in	1 1/4 in	1 1/4 in	3MRN5	10
12-17	20	3/4 in	1 3/8 in	3/8 in	1/16 in	1 1/4 in	1 1/4 in	3MRN2	25
A12-17	49	3/4 in	1 3/8 in	7/16 in	1/8 in	1 1/4 in	1 1/4 in	3MRN3	25
C12-17	107	3/4 in	1 3/8 in	9/16 in	1/4 in	1 1/4 in	1 1/4 in	3MRN4	25
A14-20	51	7/8 in	1 5/8 in	1/2 in	1/8 in	1 1/4 in	1 1/4 in	3MRN9	25
B14-20	80	7/8 in	1 5/8 in	9/16 in	3/16 in	1 1/4 in	1 1/4 in	3MRP1	25
16-22	23	1 in	1 3/4 in	7/16 in	1/16 in	1 3/8 in	1 3/8 in	3MRP2	10
A16-22	52	1 in	1 3/4 in	1/2 in	1/8 in	1 3/8 in	1 3/8 in	3MRP3	10
B16-22	81	1 in	1 3/4 in	9/16 in	3/16 in	1 3/8 in	1 3/8 in	3MRP4	25
24-28	27	1 1/2 in	2 1/8 in	7/16 in	1/16 in	1 3/4 in	1 3/4 in	3MRP4	25
A24-28	56	1 1/2 in	2 1/8 in	1/2 in	3/8 in	1 3/4 in	1 3/4 in	3MRP5	25
B24-28	85	1 1/2 in	2 1/8 in	9/16 in	3/16 in	1 3/4 in	1 3/4 in	3MRP5	25
C24-28	114	1 1/2 in	2 1/8 in	3/8 in	1/4 in	1 3/4 in	1 3/4 in	3MRP6	25



Rubber Edging

Material	Groove Width	Groove Depth	Overall Width	Overall Height	L	Temp. Range	Color	Std.	Item No.
Style A									
SBR	3/16 in	7/16 in	9/16 in	1/2 in	100 ft	0 °F to 220 °FF	Black	ASTM D2000 AA	3HCG1
SBR	1/4 in	5/16 in	3/8 in	3/8 in	100 ft	0 °F to 220 °FF	Black	ASTM D2000 AA	3HCG2
Style B									
SBR	1/32 in	5/32 in	7/64 in	7/32 in	100 ft	0 °F to 220 °FF	Black	ASTM D2000 AA	3HCG5
SBR	1/16 in	11/32 in	7/32 in	7/16 in	100 ft	0 °F to 220 °FF	Black	ASTM D2000 AA	3HCG6
SBR	3/32 in	21/64 in	3/8 in	3/8 in	100 ft	0 °F to 220 °FF	Black	ASTM D2000 AA	3HCG7
Style C									
SBR	1/8 in	1/4 in	1/4 in	5/8 in	100 ft	0 °F to 220 °FF	Black	ASTM D2000 AA	3HCG8
Neoprene	1/32 in	9/32 in	9/32 in	3/8 in	100 ft	-20 °F to 150 °FF	Black	ASTM D2000 BC	3HCH3
Neoprene	1/8 in	23/32 in	9/16 in	1 in	100 ft	-20 °F to 150 °FF	Black	ASTM D2000 BC	3HCH1
Neoprene	1/4 in	1/2 in	1/2 in	9/8 in	100 ft	-20 °F to 150 °FF	Black	ASTM D2000 BC	3HCH2
Style D									
Neoprene	1/8 in	1/4 in	3/16 in	5/16 in	100 ft	-20 °F to 150 °FF	Black	ASTM D2000 BC	3HCH5
Neoprene	3/16 in	3/8 in	3/8 in	9/16 in	100 ft	-20 °F to 150 °FF	Black	ASTM D2000 BC	3HCH6
Style E									
Neoprene	1/16 in	5/16 in	1/8 in	3/8 in	100 ft	-20 °F to 150 °FF	Black	ASTM D2000 BC	3HCH8
Neoprene	1/8 in	1/4 in	1/4 in	9/16 in	100 ft	-20 °F to 150 °FF	Black	ASTM D2000 BC	3HCH9
Style F									
Neoprene	1/32 in	1/4 in	19/64 in	3/8 in	100 ft	-20 °F to 150 °FF	Black	ASTM D2000 BC	3HCJ2
Neoprene	1/16 in	3/8 in	1/4 in	1/2 in	10 ft	-20 °F to 150 °FF	Black	ASTM D2000 BC	3BEH43
Neoprene	1/8 in	3/8 in	1/4 in	1/2 in	25 ft	-20 °F to 150 °FF	Black	ASTM D2000 BC	3BEH44
Neoprene	1/16 in	3/8 in	1/4 in	1/2 in	50 ft	-20 °F to 150 °FF	Black	ASTM D2000 BC	3BEH45
Neoprene	1/8 in	3/8 in	1/4 in	1/2 in	100 ft	-20 °F to 150 °FF	Black	ASTM D2000 BC	3HCJ3
Neoprene	1/8 in	15/32 in	23/64 in	3/8 in	100 ft	-20 °F to 150 °FF	Black	ASTM D2000 BC	3HCJ4
Neoprene	3/16 in	3/16 in	15/32 in	3/4 in	100 ft	-20 °F to 150 °FF	Black	ASTM D2000 BC	3HCJ5
Neoprene	1/4 in	19/32 in	21/64 in	13/16 in	100 ft	-20 °F to 150 °FF	Black	ASTM D2000 BC	3HCJ6
Neoprene	3/8 in	25/32 in	43/64 in	1 in	100 ft	-20 °F to 150 °FF	Black	ASTM D2000 BC	3HCJ8
Silicone	1/16 in	3/8 in	1/4 in	1/2 in	100 ft	-90 °F to 450 °FF	Red	ASTM D2000 GE	3HCJ9
Silicone	1/8 in	15/32 in	23/64 in	3/8 in	100 ft	-90 °F to 450 °FF	Red	ASTM D2000 GE	3HCK1
Style G									
Neoprene	1/32 in	5/32 in	11/64 in	1/4 in	100 ft	-20 °F to 150 °FF	Black	ASTM D2000 BC	3HCK3
Neoprene	1/16 in	7/32 in	19/64 in	3/16 in	100 ft	-20 °F to 150 °FF	Black	ASTM D2000 BC	3HCK4
Neoprene	1/8 in	9/32 in	19/64 in	3/8 in	100 ft	-20 °F to 150 °FF	Black	ASTM D2000 BC	3HCK5
Style I									
EPDM	1/4 in	5/8 in	3/4 in	19/16 in	100 ft	-40 °F to 210 °FF	Black	ASTM D2000 BA	3HCL2
EPDM	3/8 in	9/8 in	3/4 in	19/16 in	100 ft	-40 °F to 210 °FF	Black	ASTM D2000 BA	3HCL3