

Threaded Insert Information

Helical Wire Thread Insert

Converts threads, repairs stripped threads, or creates long-lasting threads in multiple materials



Key Locking Thread Insert

Use to convert or repair threads with a positive mechanical lock that prevents spinning



Knife Thread Insert

Provides sturdy machine threads in hardwood



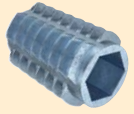
Self-Locking Thread Insert

A locking adhesive on the external threads locks the insert in to place



Hex Drive Thread Insert

Provides sturdy machine threads in soft woods



Press Insert

Provides sturdy machine threads in plastic materials



Thread Repair Assortment Kits



System of Measurement	Number of Inserts	No. of Pieces	No. of Sizes	Thread Size	Mfr. Model	Brand	Item No.
Helical Insert Assortments, Stainless Steel							
Inch	54	72	6	1/4"-20, 3/8"-16, 1/2"-18, 5/8"-11, 3/4"-14	4934	Heli-Coil	4CZD5
	60	78	6	#10-32, 1/2"-20, 1/4"-28, 3/8"-24, 5/16"-24, 7/16"-20	4936	Heli-Coil	4CZD6
	132	150	6	1/2"-12, 1/4"-20, 3/8"-16, 5/16"-18, 3/8"-11, 7/16"-14	5WU70	—	5WU70
Metric	48	64	4	M10-1.25, M5-0.80, M6-1.00, M8-1.25	4937-125	Heli-Coil	4CZU7
	48	64	4	M10-1.50, M5-0.80, M6-1.00, M8-1.25	4937-150	Heli-Coil	4CZU8



4CZD5

System of Measurement	No. of Pieces	No. of Sizes	Wall Type	Internal Thread Size	Mfr. Model	Brand	Item No.
Self-Locking Insert Assortments, Steel							
Inch	22	4	Heavy Wall	#1-8, 1/2"-13, 3/4"-10, 5/8"-11	EZ-C816	E-Z Lok	4ZE85
	22	4	Heavy Wall	#1-14, 1/2"-20, 3/4"-16, 5/8"-18	EZ-F816	E-Z Lok	4ZE88
	46	5	Heavy Wall	#10-24, 1/2"-13, 1/4"-20, 3/8"-16, 5/16"-18	EZ-C108	E-Z Lok	4ZE83
Inch/Metric	46	5	Heavy Wall	#10-32, 1/2"-20, 1/4"-28, 3/8"-24, 5/16"-24	EZ-F108	E-Z Lok	4ZE86
	36	4	Heavy Wall	M10-1.50, M12-1.75, M6-1.00, M8-1.25	EZ-M612	E-Z Lok	4ZE94
Metric	44	5	Heavy Wall	#10-32, 1/2"-20, 1/4"-28, 3/8"-24, 5/16"-24	EZ-M508	E-Z Lok	4ZE93
	33	4	Heavy Wall	M10-1.50, M12-1.75, M16-2.00, M8-1.25	EZ-M200	E-Z Lok	4ZE91
Metric	50	5	Heavy Wall	M3-0.50, M4-0.70, M5-0.80, M6-1.00, M8-1.25	EZ-M100	E-Z Lok	4ZE89
	Self-Locking Insert Assortments, Stainless Steel						
Inch	46	4	Heavy Wall	#10-24, 1/2"-13, 1/4"-20, 3/8"-16, 5/16"-18	EZ-C303	E-Z Lok	4ZE84
	46	5	Heavy Wall	#10-32, 1/2"-20, 1/4"-28, 3/8"-24, 5/16"-24	EZ-F303	E-Z Lok	4ZE87
Inch/Metric	36	4	Heavy Wall	M10-1.50, M12-1.75, M6-1.00, M8-1.25	EZ-M613	E-Z Lok	4ZE95
	33	4	Heavy Wall	M10-1.50, M12-1.75, M16-2.00, M8-1.25	EZ-M203	E-Z Lok	4ZE92
Metric	50	5	Heavy Wall	M3-0.50, M4-0.70, M5-0.80, M6-1.00, M8-1.25	EZ-M103	E-Z Lok	4ZE90



4ZE83

Thread Repair Kits, Tools, and Refills

Repair tools adjust to fit all thread types and multiple sizes.

Repair Kit	Size	Includes	Item No.
External 5/32 in to 1 1/2 in		1 1/16" to 1 1/2" External Repair Tool, 5/32" to 3/4" External Repair Tool	6URT1
External 5/32 in to 6 in		1 3/8" to 6" External Repair Tool, 1/16" to 1 1/2" External Repair Tool, 5/32" to 3/4" External Repair Tool	6URP0
Internal 9/16 in to 1 3/16 in		1/2" to 3/8" Internal Repair Tool, 1/16" to 1 3/16" Internal Repair Tool, 5/32" to 3/4" Internal Repair Tool	6URN4
Internal 5/16 in to 1 1/4 in		1/2" to 5/8" Internal Repair Tool, 1/16" to 1 3/16" Internal Repair Tool, 5/16" to 7/16" Internal Repair Tool, 3/8" to 1 1/4" Internal Repair Tool	6URN5
Internal 7/8 in to 2 5/8 in		1 1/4" to 2 1/2" Internal Repair Tool, 7/8" to 1 1/4" Internal Repair Tool	6URN9
External 5/32 in to 3/4 in, Internal 5/16 in to 1 3/16 in		1/2" to 5/8" Internal Repair Tool, 5/16" to 1 1/2" Internal Repair Tool, 5/32" to 3/4" External Repair Tool	6URN6
External 5/32 in to 1 1/2 in, Internal 9/16 in to 1 1/4 in		1/2" to 5/8" Internal Repair Tool, 1/16" to 1 3/16" Internal Repair Tool, 5/16" to 7/16" Internal Repair Tool, 5/32" to 3/4" External Repair Tool, 1/2" to 3/8" Internal Repair Tool, 1/16" to 1 1/2" External Repair Tool, 1/16" to 1 3/16" Internal Repair Tool, 5/16" to 7/16" Internal Repair Tool, 5/32" to 3/4" External Repair Tool	6URN7
External 5/32 in to 1 1/2 in, Internal 9/16 in to 1 1/4 in		1/2" to 3/8" Internal Repair Tool, 1/16" to 1 1/2" External Repair Tool, 1/16" to 1 3/16" Internal Repair Tool, 5/16" to 7/16" Internal Repair Tool, 5/32" to 3/4" External Repair Tool	6URN8



6URT1

Description	Mfr. Model	Item No.
Thread Repair Tool		
External 5/32 in to 1/2 in	NES06040	6URN2
External 5/32 in to 3/4 in	NES1A	6URT2
External 1 1/16 in to 1 1/2 in	NES2	6URT3
External 1 3/8 in to 6 in	NES3	6URT4
Internal 9/16 in to 7/16 in	NES21	6URP2
Internal 1/2 in to 5/8 in	NES22	6URP4
Internal 1 1/16 in to 1 3/16 in	NES23	6URP6
Internal 7/8 in to 1 1/4 in	NES24	6URP8
Internal 1 1/4 in to 2 1/2 in	NES25	6URR0
Internal 1 1/4 in to 2 5/8 in	NES26	6URR1
Internal 2 3/4 in to 3 3/4 in	NES27	38C905
Internal 3 1/4 in to 3 3/4 in	NES28	38C906
Internal 3 3/4 in to 4 1/4 in	NES29	38C907

Description	Mfr. Model	Item No.
Accessories		
Keyway Skip Accessory Tool		
For Use With Large External Thread Repair Tool 6URT4	NES03101	6URR2
Steel Replacement Blade		
For Use With External Thread Repair Tool 6URT3	NESRK2	6URT6
For Use With External Thread Repair Tool 6URT4	NESRK3	6URT7
For Use With Thread Repair Tool 6URN2	NES060406	6URN3
For Use With Internal Thread Repair Tool 6URP6	NESRK23	6URR5
For Use With Internal Thread Repair Tool 6URP8	NESRK24	6URR6
For Use With Internal Thread Repair Tool 6URR0	NESRK25	6URR7