



Hoist Rings

PIVOT-ONLY

Rings are built with forged chrome moly steel, with black oxide finish. Heat-treated and pivot 180° under load. 6:1 design factor.

EN-GUARD ENHDHR

Designed with 4140 alloy steel. Corrosion-resistant electroless nickel finish. Serialized; disassemble and reassemble for easy inspection. Rings bolt-on and swivel 360° and pivot 180°. 5:1 design factor.

HDHR AND HDHR-METRIC

Rings feature forged 4140 alloy steel with black oxide finish. They have individual serial numbers.

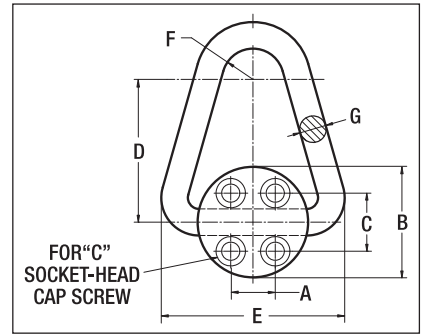
Bolt-on and swivel 360° and pivot 180° under load. 5:1 design factor.

SEHR, SEHR-METRIC, AND SEHRSS

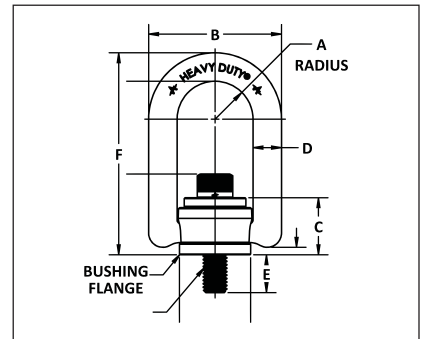
Rings are serialized, bolt-on, and feature 5:1 design factor. They swivel 360° and pivot 180° under load. SEHR and SEHRM rings are designed with 4140 alloy steel and black oxide finish. SEHRSS are designed with 300 series stainless steel.

WMHR

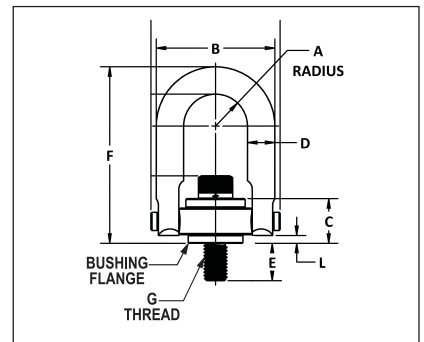
4140 alloy steel construction with black oxide finish. Welded and swivel 360° and pivot 180° under load.



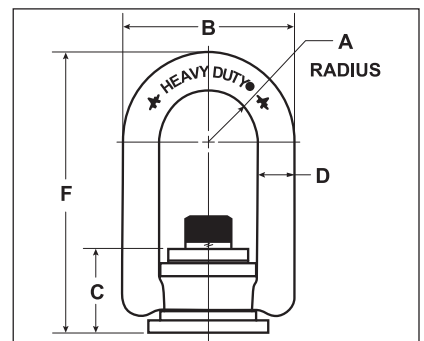
Pivot Only



HDHR/ENHDHR/HDHRM



SEHR/SEHRM



WMHR

Working Load Limit	A	B	C	D	E	F	Bail Dia.	Thread Size	Installation Torque	Item No.	
Pivot Only											
20000 lb	5 in	3 1/2 in	2 1/4 in	1 in	6 3/4 in	1 7/8 in	1 in	5/8 (4 PLCS)	42 to 50 ft-lb	4R976	†
Pivot/Swivel											
En-Guard™ ENHDHR											
1000 lb	2 1/2 in	2 1/4 in	3 1/2 in	7/16 in	9/16 in	3 1/4 in	1 in	3/8-16	12 ft-lb	39RJ70	#
2500 lb	1 in	3 1/2 in	1 1/2 in	3/4 in	5/16 in	5 9/16 in	1 in	1/2-13	28 ft-lb	39RJ55	#
4000 lb	1 in	3 1/2 in	1 1/2 in	3/4 in	1 in	5 9/16 in	1 in	5/8-11	60 ft-lb	39RH89	#
5000 lb	1 in	3 1/2 in	1 1/2 in	3/4 in	1 in	5 9/16 in	1 in	3/4-10	100 ft-lb	39RJ25	#
10000 lb	1 1/2 in	5 7/16 in	1 3/4 in	1 in	1 29/64 in	1 in	1 1/8 in	1"-8	230 ft-lb	39RH95	#
15000 lb	2 in	6 3/4 in	2 7/8 in	1 1/4 in	1 7/8 in	9 7/32 in	1 in	1 1/4-7	470 ft-lb	39RJ39	#
HDHR											
550 lb	2 1/2 in	2 1/4 in	3 1/2 in	7/16 in	9/16 in	3 1/4 in	1 in	3/8-16	5 ft-lb	39RJ53	#
800 lb	2 1/2 in	2 1/4 in	3 1/2 in	7/16 in	1 1/16 in	3 1/4 in	1 in	5/16-18	7 ft-lb	39RJ23	#
	2 1/2 in	2 1/4 in	3 1/2 in	7/16 in	9/16 in	3 1/4 in	1 in	5/16-18	7 ft-lb	39RH92	#
	2 1/2 in	2 1/4 in	3 1/2 in	7/16 in	9/16 in	3 1/4 in	7/16 in	3/8-16	12 ft-lb	4R968	†
1000 lb	2 1/2 in	2 1/4 in	3 1/2 in	7/16 in	1 1/16 in	3 1/4 in	7/16 in	3/8-16	12 ft-lb	4ZW85	†
2250 lb	2 1/2 in	2 1/4 in	3 1/2 in	7/16 in	1 1/16 in	3 1/4 in	1 in	1/2-13	26 ft-lb	39RJ41	#
	1 in	3 1/2 in	1 1/2 in	3/4 in	3/4 in	5 9/16 in	1 in	1/2-13	28 ft-lb	39RJ67	#
2500 lb	1 in	3 1/2 in	1 1/2 in	3/4 in	1 in	5 9/16 in	1 in	1/2-13	28 ft-lb	4R982	†
	1 in	3 1/2 in	1 1/2 in	3/4 in	1 1/4 in	5 9/16 in	3/4 in	1/2-13	28 ft-lb	4R984	†
	1 in	3 1/2 in	1 1/2 in	3/4 in	1 in	5 9/16 in	3/4 in	5/8-11	60 ft-lb	4R986	†
4000 lb	1 in	3 1/2 in	1 1/2 in	3/4 in	1 1/4 in	5 9/16 in	3/4 in	5/8-11	60 ft-lb	4ZW89	†
	1 in	3 1/2 in	1 1/2 in	3/4 in	1 in	5 9/16 in	3/4 in	3/4-10	100 ft-lb	4R990	†
5000 lb	1 in	3 1/2 in	1 1/2 in	3/4 in	1 1/2 in	5 9/16 in	3/4 in	3/4-10	100 ft-lb	4ZW90	†
	1 1/2 in	5 7/16 in	1 3/4 in	1 in	1 13/64 in	7 3/8 in	1 in	3/4-10	100 ft-lb	4ZW80	†
7000 lb	1 1/2 in	5 7/16 in	1 3/4 in	1 in	1 29/64 in	7 3/8 in	1 in	3/4-10	100 ft-lb	4ZW81	†
8000 lb	1 1/2 in	5 7/16 in	2 3/4 in	1 in	1 1/4 in	7 3/8 in	1 in	7/8-9	160 ft-lb	4ZW79	†
	1 1/2 in	5 7/16 in	1 3/4 in	1 in	1 29/64 in	7 3/8 in	1 in	1"-8	230 ft-lb	4ZW82	†
10000 lb	1 1/2 in	5 7/16 in	1 3/4 in	1 in	1 1/4 in	7 3/8 in	1 in	1"-8	230 ft-lb	4R970	†
	1 1/2 in	5 7/16 in	1 3/4 in	1 in	2 13/64 in	7 3/8 in	1 in	1"-8	230 ft-lb	4ZW83	†
15000 lb	2 in	6 3/4 in	2 7/8 in	1 1/4 in	2 3/8 in	9 7/32 in	1 1/4 in	1 1/4-7	470 ft-lb	4ZW86	†
20000 lb	2 in	6 3/4 in	2 7/8 in	1 1/4 in	2 3/8 in	9 7/32 in	1 1/4 in	1 1/4-6	670 ft-lb	4ZW87	†
24000 lb	2 in	6 3/4 in	2 7/8 in	1 1/4 in	2 3/8 in	9 7/32 in	1 1/4 in	1 1/2-6	800 ft-lb	4ZW88	†
30000 lb	2 in	6 3/4 in	2 7/8 in	1 1/4 in	2 3/32 in	9 7/32 in	1 in	2-4-1/2	1,100 ft-lb	39RH96	#
HDHR - Metric											
990 lb	16.5 mm	58.2 mm	24.4 mm	11.1 mm	16 mm	82 mm	1 in	M10 x 1.5	16 ft-lb	39RJ87	#
2300 lb	25.4 mm	88.9 mm	38.1 mm	19.1 mm	25 mm	134.9 mm	1 in	M12 x 1.75	37 ft-lb	39RH82	#
4100 lb	25.4 mm	88.9 mm	38.1 mm	19.1 mm	25 mm	134.9 mm	1 in	M16 x 2.0	80 ft-lb	39RJ06	#
4800 lb	25.4 mm	88.9 mm	38.1 mm	19.1 mm	25 mm	134.6 mm	1 in	M20 x 2.5	135 ft-lb	39RJ40	#
27500 lb	50.8 mm	171.5 mm	72.9 mm	31.8 mm	80 mm	234.2 mm	1 in	M42 x 4.5	1,085.5 ft-lb	39RJ24	#
SEHR											
550 lb	7/16 in	1 39/64 in	23/32 in	3/8 in	59/64 in	2 43/64 in	3/8 in	1/4-20	5 ft-lb	39RH91	#
800 lb	7/16 in	1 39/64 in	23/32 in	3/8 in	19/64 in	2 43/64 in	3/8 in	5/16-18	7 ft-lb	39RJ26	#
1000 lb	7/16 in	1 39/64 in	23/32 in	3/8 in	39/64 in	2 43/64 in	3/8 in	3/8-16	12 ft-lb	39RJ79	#
	49/64 in	2 13/32 in	15/16 in	1/2 in	1 3/64 in	3 29/32 in	1/2 in	1/2-13	28 ft-lb	39RJ43	#
2500 lb	7/8 in	3 1/4 in	1 1/2 in	3/4 in	25/32 in	4 29/32 in	3/4 in	1/2-13	28 ft-lb	39RJ86	#
	7/8 in	3 1/4 in	1 1/2 in	3/4 in	25/32 in	6 29/32 in	3/4 in	1/2-13	28 ft-lb	4R980	†
4000 lb	7/8 in	3 1/4 in	1 1/2 in	3/4 in	1 1/2 in	4 29/32 in	3/4 in	5/8-11	60 ft-lb	39RJ60	#
	7/8 in	3 1/4 in	1 1/2 in	3/4 in	1 9/32 in	4 29/32 in	3/4 in	5/8-11	60 ft-lb	39RJ30	#
	7/8 in	3 1/4 in	1 1/2 in	3/4 in	1 9/32 in	4 29/32 in	3/4 in	1/2-13	28 ft-lb	39RH83	#
5000 lb	7/8 in	3 1/4 in	1 1/2 in	3/4 in	1 17/32 in	4 29/32 in	3/4 in	3/4-10	100 ft-lb	39RJ91	#
	7/8 in	3 1/4 in	1 1/2 in	3/4 in	1 1/2 in	4 29/32 in	3/4 in	3/4-10	100 ft-lb	39RJ50	#
7000 lb	1 13/32 in	4 51/64 in	1 29/32 in	1 in	1 39/64 in	6 39/64 in	1 in	3/4-10	100 ft-lb	39RH88	#
10000 lb	1 13/32 in	4 51/64 in	1 29/32 in	1 in	1 39/64 in	6 39/64 in	1 in	1"-8	230 ft-lb	39RJ54	#
15000 lb	1 3/4 in	6 in	2 7/16 in	1 1/4 in	1 57/64 in	8 7/64 in	1 1/4 in	1 1/4-7	470 ft-lb	39RJ45	#
30000 lb	2 1/4 in	8 in	2 19/16 in	1 3/4 in	2 31/32 in	12 15/32 in	1 in	2-4-1/2	1,100 ft-lb	39RJ84	#
50000 lb	3 in	10 1/2 in	4 3/32 in	2 1/4 in	4 in	16 1/8 in	1 in	2 1/2-8	2,100 ft-lb	39RH79	#
75000 lb	3 3/4 in	13 in	5 17/64 in	2 3/4 in	5 13/64 in	19 1/2 in	1 in	3-4	4,300 ft-lb	39RJ89	#
SEHR - Metric											
4100 lb	22.4 mm	82.5 mm	31 mm	19 mm	24 mm	121.4 mm	1 in	M16 x 2.0	80 ft-lb	39RJ16	#
9200 lb	35.6 mm	121.2 mm	43.4 mm	25.4 mm	34 mm	165.8 mm	1 in	M24 x 3.0	311 ft-lb	39RJ75	#
69300 lb	95.25 mm	330.2 mm	133.9 mm	69.85 mm	132 mm	495.3 mm	1 in	M72 x 6.0	5,670 ft-lb	39RJ62	#
SEHRSS											
275 lb	7/16 in	1 39/64 in	23/32 in	3/8 in	39/64 in	2 43/64 in	3/8 in	1/4-20	2.5 ft-lb	39RJ77	#
1250 lb	49/64 in	2 13/32 in	15/16 in	1/2 in	1 5/64 in	3 29/32 in	1/2 in	1/2-13	14 ft-lb	39RJ14	#
2500 lb	7/8 in	3 1/4 in	1 1/2 in	3/4 in	1 17/32 in	4 29/32 in	3/4 in	3/4-10	50 ft-lb	39RJ38	#
WMHR											
5000 lb	1 in	3 1/2 in	1 5/8 in	3/4 in	—	5 15/32 in	1 in	1/4 in	—	39RJ19	#
24000 lb	2 in	6 3/4 in	3 1/8 in	1 1/4 in	—	9 1/2 in	1 in	1/2 in	—	39RJ61	#

† Magnetic particle inspected per ATSM E 1444. # Complies with ASME B30.26