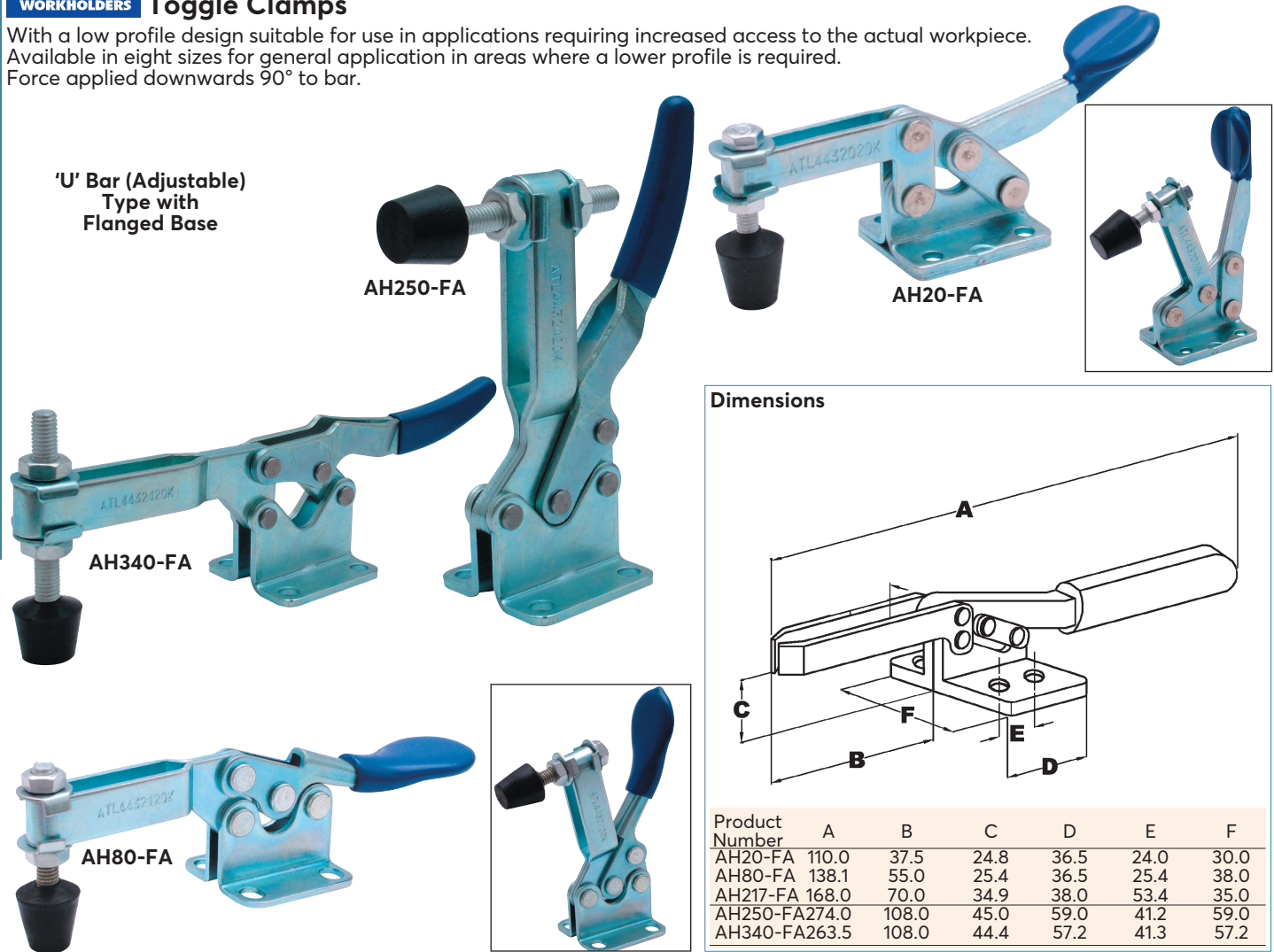




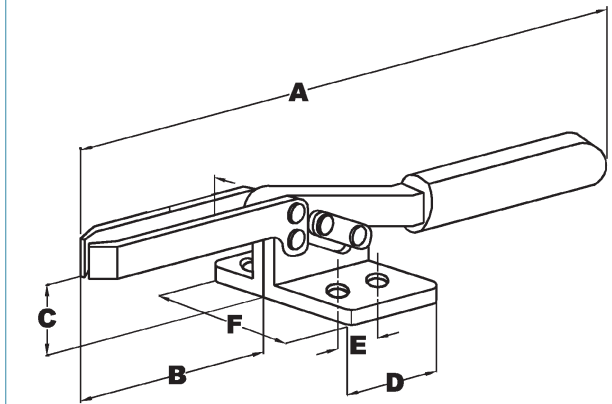
Horizontal Industrial Toggle Clamps

With a low profile design suitable for use in applications requiring increased access to the actual workpiece. Available in eight sizes for general application in areas where a lower profile is required. Force applied downwards 90° to bar.

'U' Bar (Adjustable) Type with Flanged Base



Dimensions



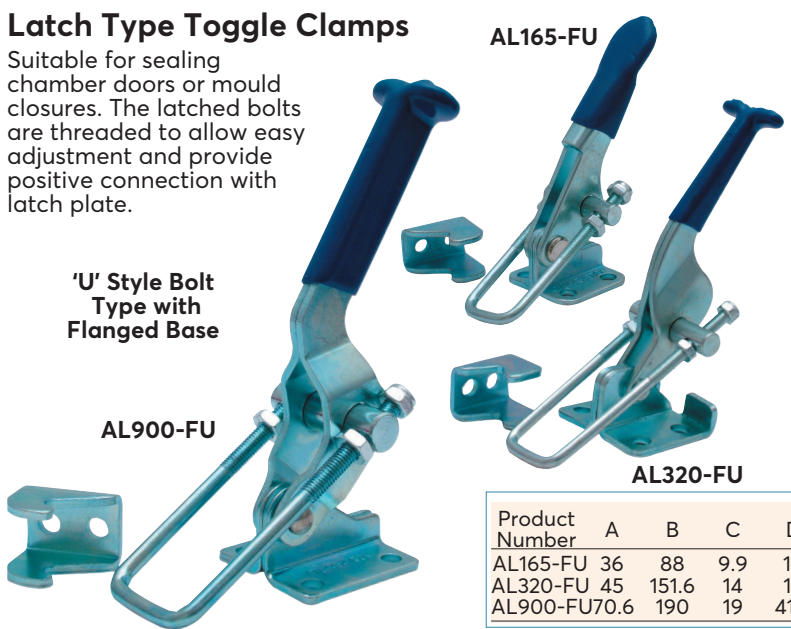
Product Number	A	B	C	D	E	F
AH20-FA	110.0	37.5	24.8	36.5	24.0	30.0
AH80-FA	138.1	55.0	25.4	36.5	25.4	38.0
AH217-FA	168.0	70.0	34.9	38.0	53.4	35.0
AH250-FA	274.0	108.0	45.0	59.0	41.2	59.0
AH340-FA	263.5	108.0	44.4	57.2	41.3	57.2

Product Number	Holding Capacity	Movement Handle	Bar	Base Type	Supplied with	Weight each	Order Code ATL-443	Price/1 THB
AH20-FA	30kg	88°	80°	Flanged	Tipped Spindle (M6) and Flanged Washers	100g	-2020K	798.00
AH80-FA	80kg	60°	85°		Tipped Spindle (M6) and Flanged Washers	130g	-2120K	725.00
AH217-FA	217kg	65°	90°		Tipped Spindle (M8) and Flanged Washers	312g	-2220K	914.00
AH250-FA	250kg	94°	76°		Hexagon Head Spindle (M10) and Flanged Washers	500g	-2620K	1449.00
AH340-FA	340kg	50°	85°		Tipped Spindle (M10) and Flanged Washers	265g	-2420K	1061.00

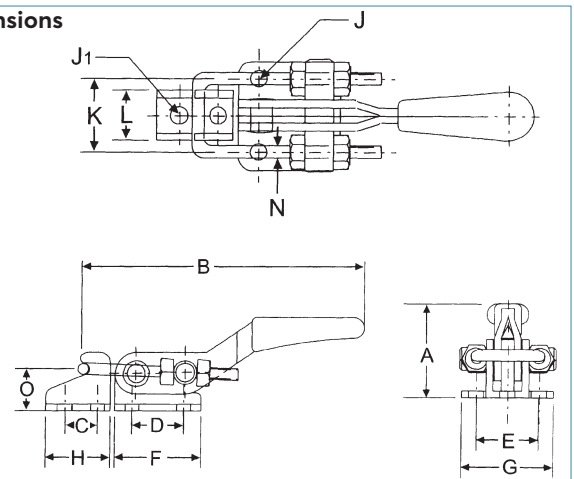
Latch Type Toggle Clamps

Suitable for sealing chamber doors or mould closures. The latched bolts are threaded to allow easy adjustment and provide positive connection with latch plate.

'U' Style Bolt Type with Flanged Base



Dimensions



Product Number	A	B	C	D	E	F	G	H	J	J ₁	K	L	N	O
AL165-FU	36	88	9.9	16	19	26	28	45	4.3	4.3	19	13.2	3.3	12
AL320-FU	45	151.6	14	19	31.8	39.6	44.5	25	6.8	6.8	25.4	17.5	4	17
AL900-FU	70.6	190	19	41.4	38	60.5	54	38	8.4	8.4	44.5	30.0	8	24

Product Number	Holding Capacity	Drawing Movement	Drawing Adjust	Base Type	Description	Weight each	Order Code ATL-443	Price/1 THB
AL165-FU	165kg	30mm	9.9mm	Flanged	U-Style Bolt	68g	-4070K	840.00
AL320-FU	320kg	45mm	9.6mm		U-Style Bolt	225g	-4010K	914.00
AL900-FU	900kg	80mm	23.8mm		U-Style Bolt	650g	-4130K	977.00